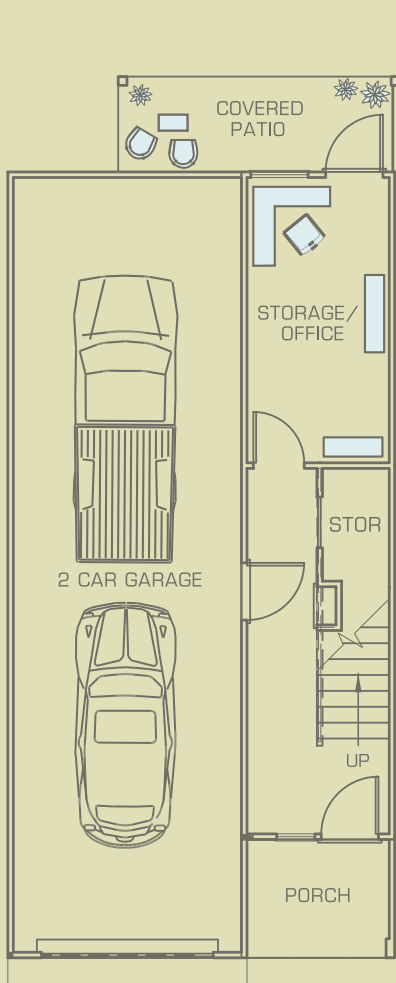


sola

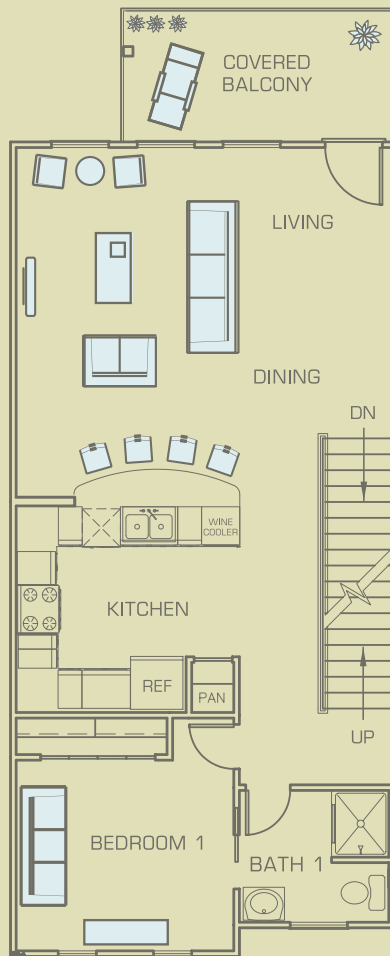
CITY HOMES

BARCELONA B2 Interior: 1,984 sq ft, Covered porches/balconies: 227 sq ft, Total: 2,211 sq ft
 B2-E Interior: 1,997 sq ft, Covered porches/balconies: 225 sq ft, Total: 2,222 sq ft



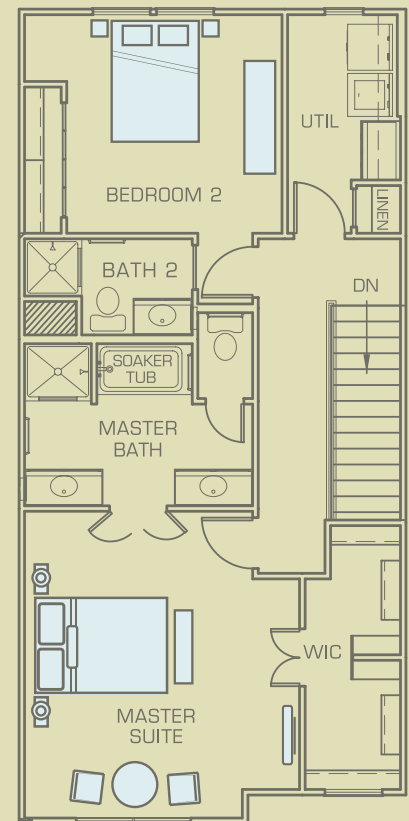
1st Floor

- Tandem 2-car garage
- Covered back patio
- Mixed use room with access to patio
- Storage closet
- Covered front porch



2nd Floor

- Open living and dining area with wall of windows
- Large covered balcony
- Spacious U-shaped kitchen with dining counter
- Private bedroom/office
- Full bathroom



3rd Floor

- Large utility room with storage
- Additional bedroom
- Full bathroom
- Master bedroom suite
- Oversized walk-in closet
- Bathroom with dual vanity cabinets, separate shower and soaker tub